



Features

- >> Instant on/ off; No UV/ flickering.
- >> Integrated design for lens and heat sink.
- >> Light and slim design reducing shipping costs.
- >> Replaceable optics according to customer requirements.
- >> Simple & concise design avoids the accumulation of water and ash ensuring better heat transfer .
- >> Suitable for round pole in $\phi 60\text{mm}$ or below and square in $60 \times 60\text{mm}$.
- >> Reserved space design for LOGO and label.
- >> ADC12 die-casting material enables better heat dissipation.

Product Detail

Model No.	COMO-ARM30-XXXN-HM	COMO-ARM50-XXXN-HM	COMO-ARM80-XXXN-HM	COMO-ARM100-XXXN-HM
Power Consumption	30W	50W	80W	100W
Luminous Flux @5700K	3600LM	6000LM	9600LM	12000LM
LED Type	Lumileds 3030		Tiandian 3030	
Light Efficacy @5700K	120lm/w		120lm/w	
CCT	5700K (4000K, 3000K optional)		5700K (4000K, 3000K optional)	
Color Rendering Index (CRI)	Ra>70		Ra>70	
Driver	Philips		DONE	
Type of driver	Isolated		Isolated	
Input Voltage	220-240 VAC		100-277 VAC	
Frequency	50/60Hz		50/60Hz	
Power efficiency	30W ≥ 0.88 ; 50W ≥ 0.89 ; 80W/100W ≥ 0.9		≥ 0.88	
Power Factor	≥ 0.9		≥ 0.9	
THD	$\leq 10\%$		$\leq 10\%$	
Beam angle	Type II (150X75) / 120°			
Surge Protection	10KV of Surge Protection Device			
Material	Structure	Die casting ADC12		
	Finish	Powder coated		
	Lens	(PC)Polycarbonate		
	Glass	Tempered glass		
Fixture Color	Grey RAL9006			
IP Rating	IP65			
IK Rating	IK08			
Protection Class	Class I			
Mounting Option	Pole Mounted			
Operating Temperature	-40 °C to + 50°C (outdoor)			
Intelligent Control	1-10V Dimming/DALI optional			
Certificate	CE, RoHS			
Packing information	1pc/ctn			
Net Weight	3.95kg	3.95kg	3.95kg	3.95kg
Gross Weight	5.8kg	5.8kg	5.8kg	5.8kg

Light Distribution Curve



Type II
150deg*75deg

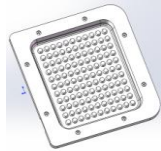


120deg

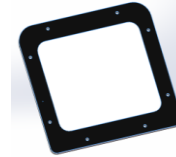
Standard Accessories



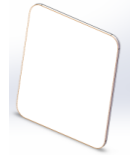
Surge Protector
--10KV
--120-277V
-- IP20 with CE certificate



PC Lens with Type II



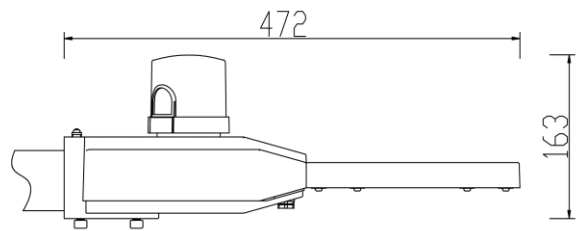
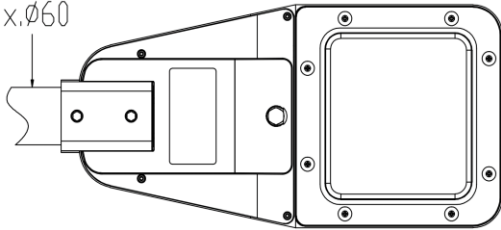
Tempered glass with 120 Deg



PC with 120

Outline Drawing

Min. $\phi 40$
Max. $\phi 60$



Remark: The specification is subject to change without notice, please kindly contact us prior to ordering